
5.5V-100V Wide Input Voltage Range Synchronous Buck Controller

T

SCT82A32

| | | | | |
|--|--|--|--|--|
| | | | | |
| | | | | |
| | | | | |
| | | | | |
| | | | | |
| | | | | |

| PARAMETER | THERMAL METRIC | DFN3.5X4.5-20L | UNIT |
|-----------|----------------|----------------|------|
| | | | |
| | | | |
| | | | |
| | | | |
| | | | |

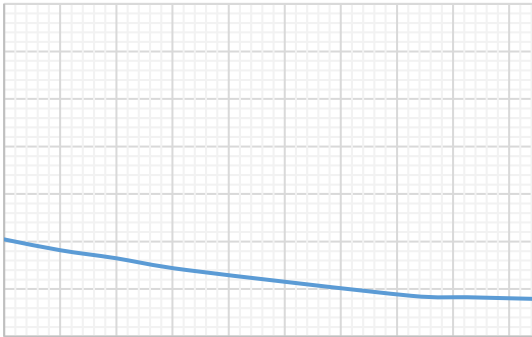
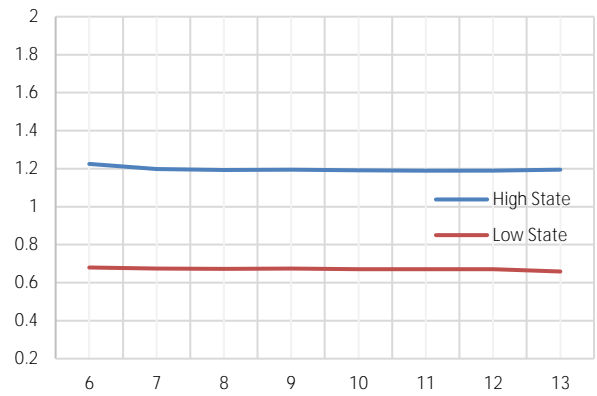
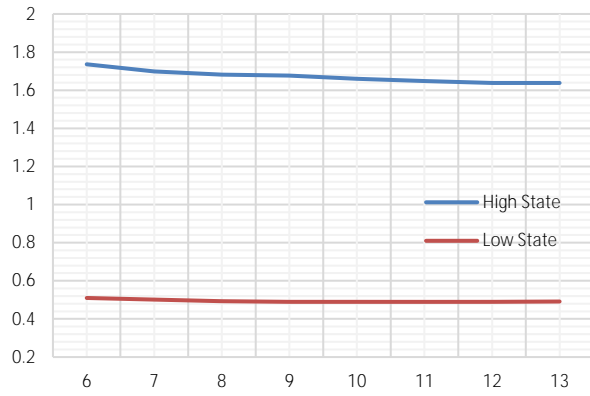
SCT82A32

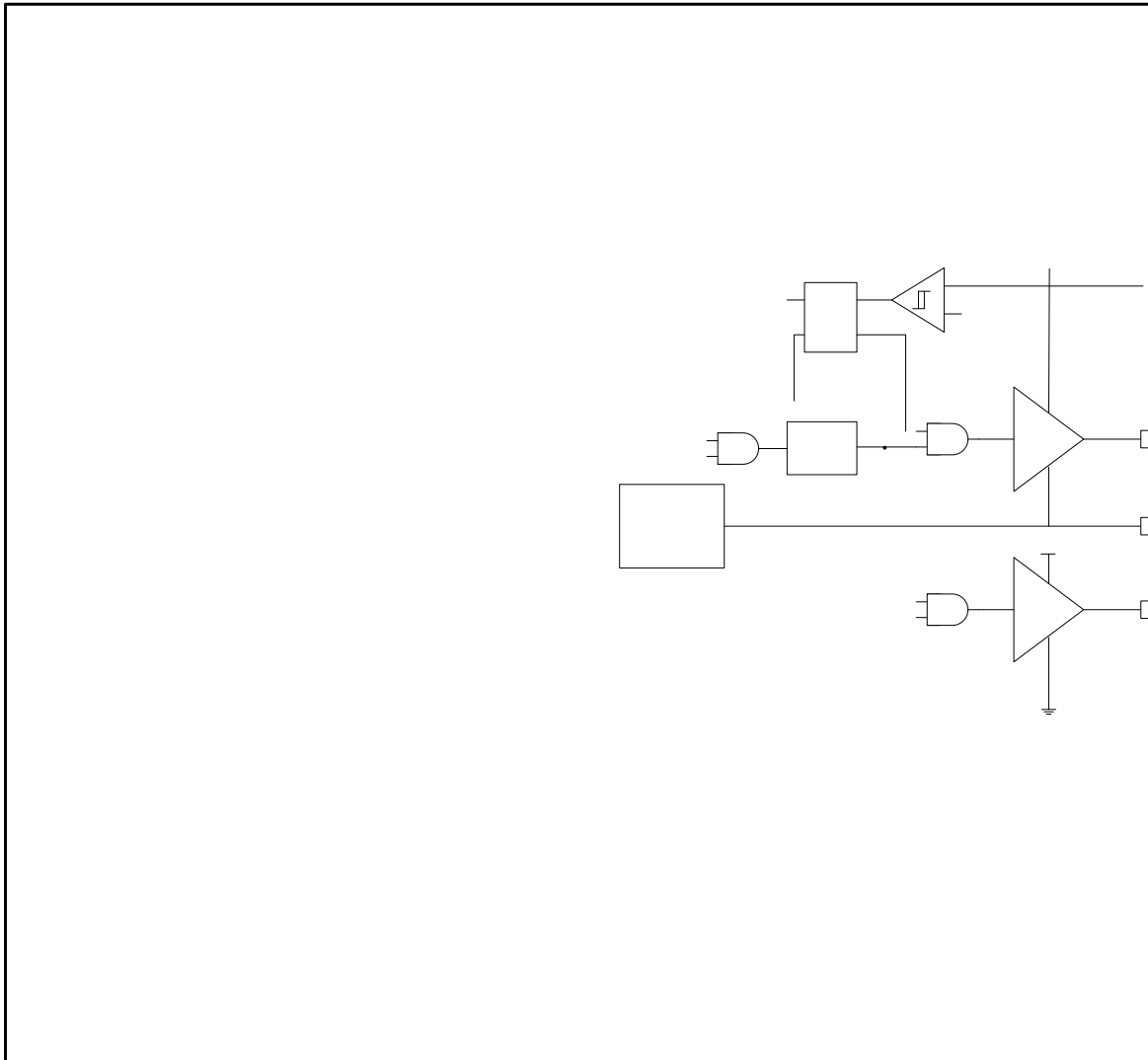
| SYMBOL | PARAMETER | TEST CONDITION | MIN | TYP | MAX | UNIT |
|--------|-----------|----------------|-----|-----|-----|------|
| | | | | | | |

Soft-

SYMBOL

SCT82A32





Voltage Mode Control

Gate Drivers

Device Functional Modes

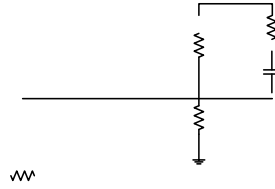
Shutdown Mode

Standby Mode

Active Mode

SCT82A32

Control loop compensation



| | |
|--|--|
| | |
| | |

SCT82A32

Application Waveforms(continued)

Typical Application

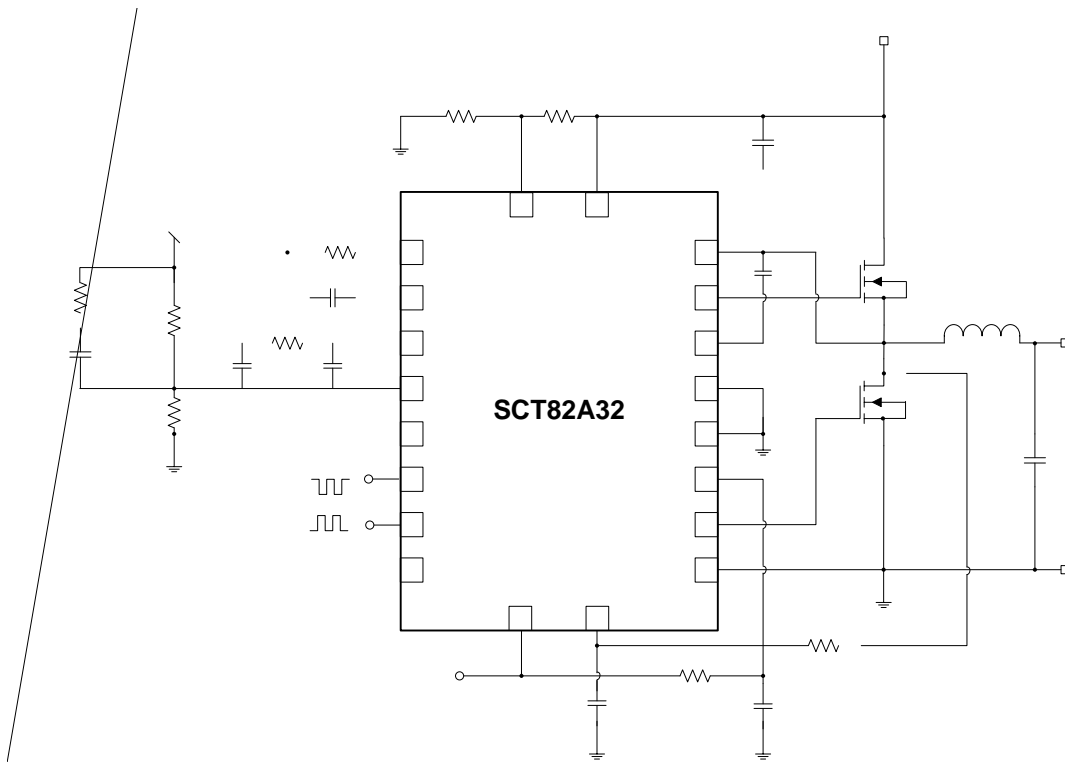


Figure 41. Application Schematic, 48V to 5V, 20A Buck Regulator at 400kHz

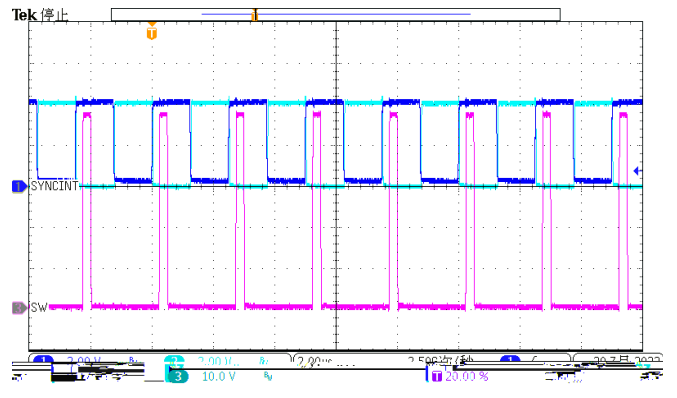
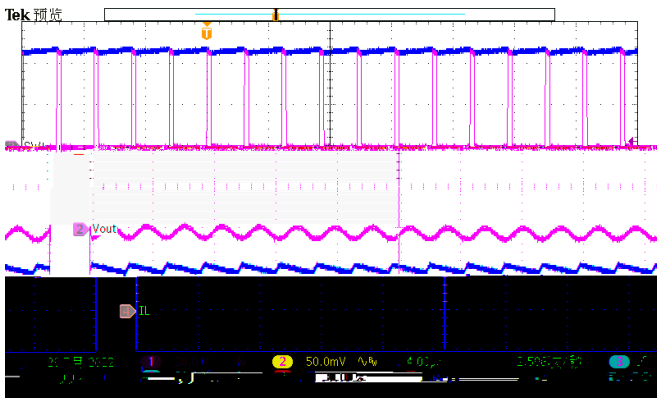
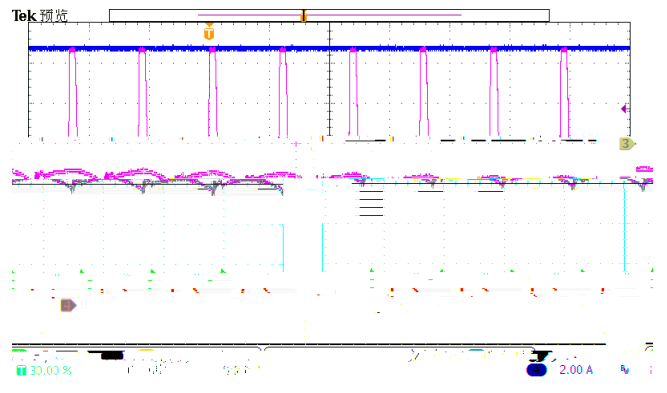
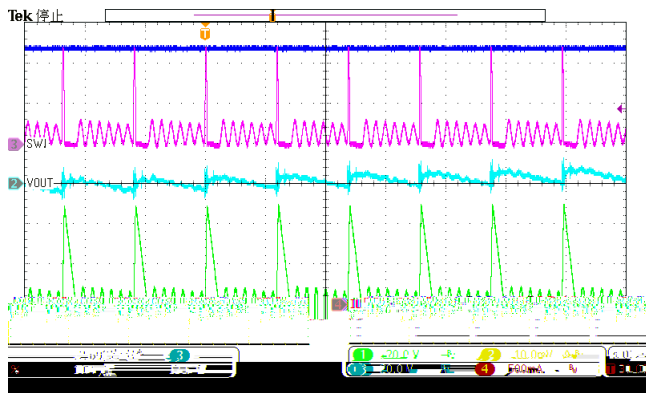
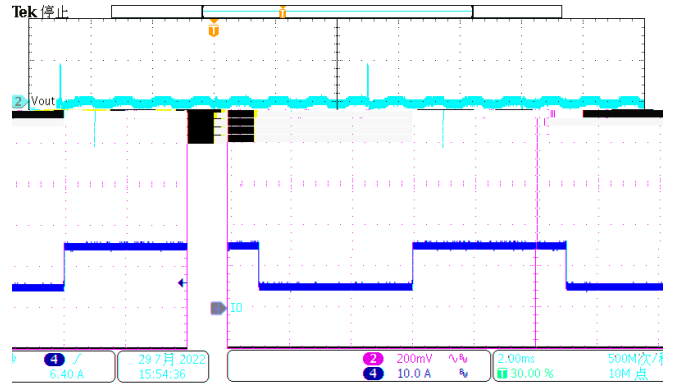
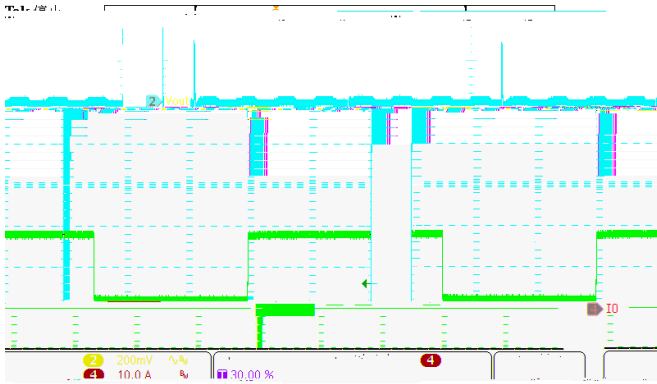
Design Parameters

| Design Parameters | Example Value |
|-------------------|---------------|
| | |
| | |
| | |
| | |
| | |
| | |
| | |
| | |

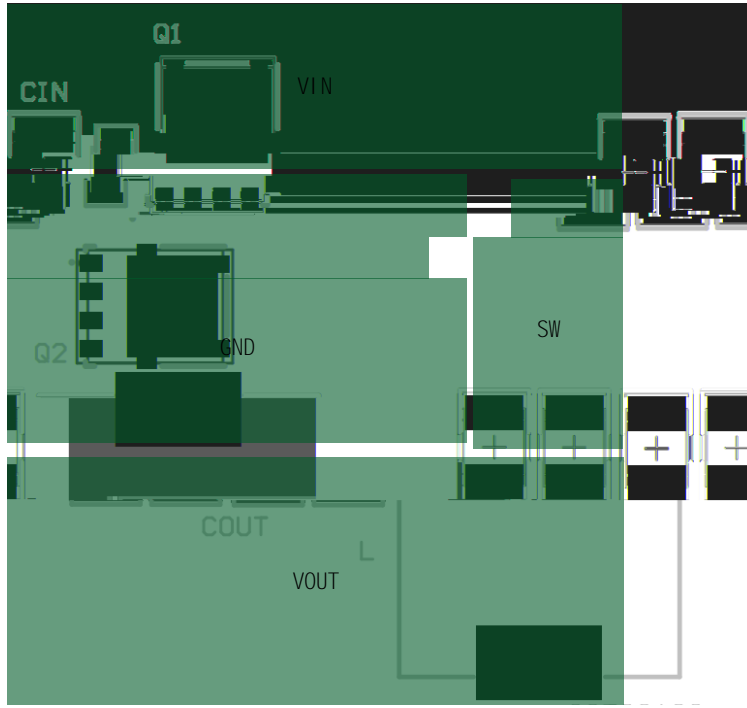
SCT82A32

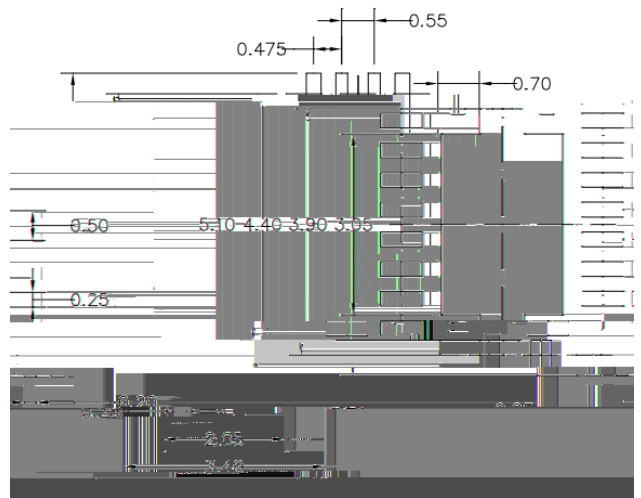
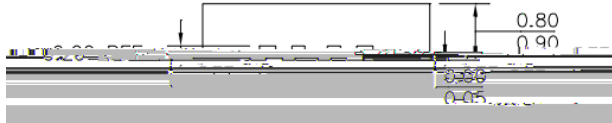
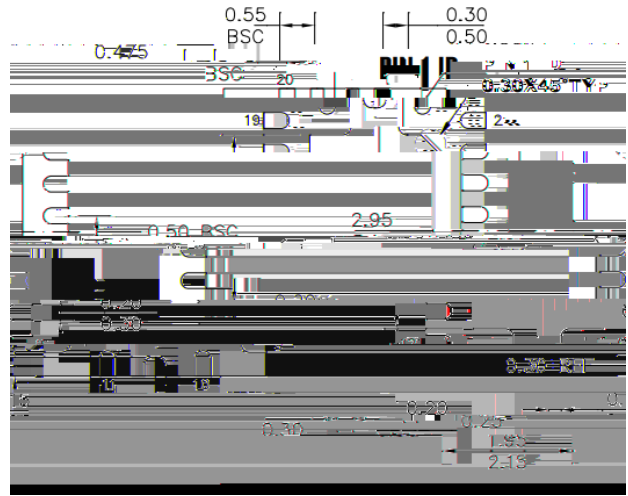
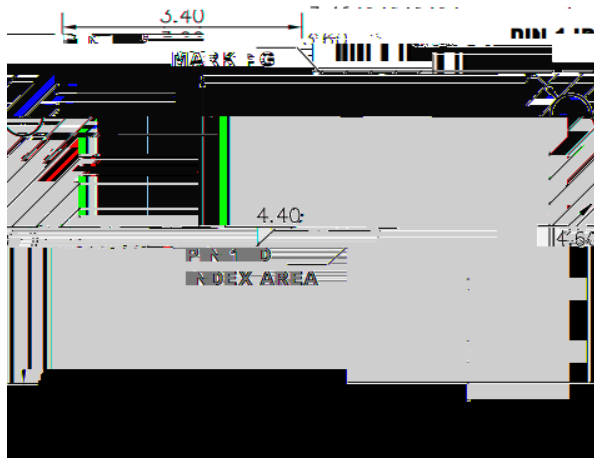
Application Waveforms

Application Waveforms(continued)



Layout Guideline





NOTE:

| | | | | | |
|--|--|--|--|--|--|
| | | | | | |
| | | | | | |

| | | | | | |
|--|--|--|--|--|--|
| | | | | | |
| | | | | | |