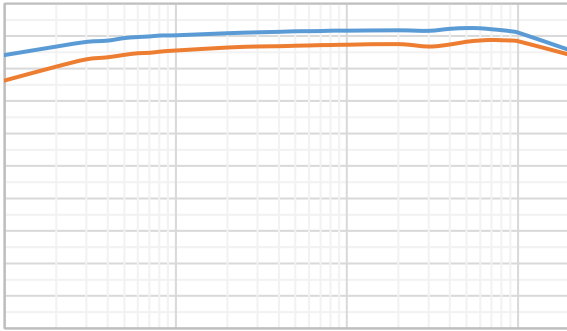

--	--	--	--	--	--	--

SCT CONFIDENTIAL

§

SCT CONFID



SCT CONFIDENTIAL

SCTCO

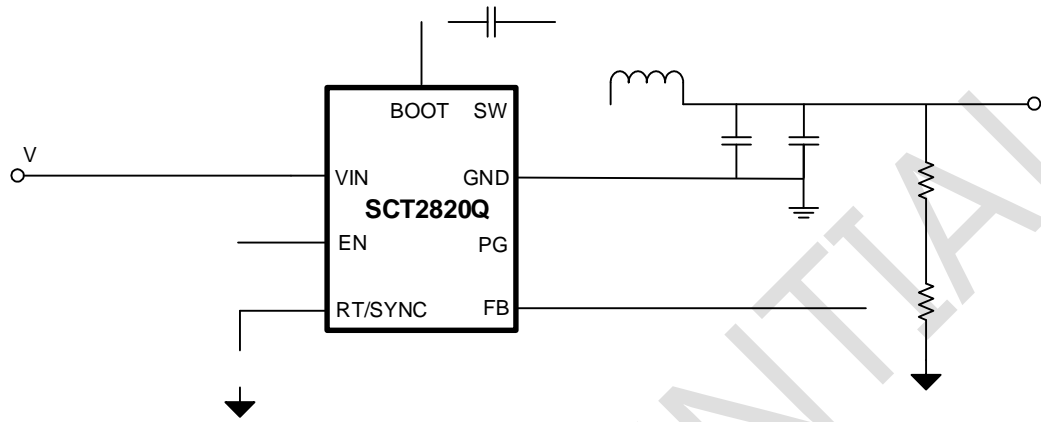
SCT CON

$$1 = 2 \times \left(\frac{1}{1.25} - 1 \right)$$

SCT CONFIDENTIAL

SCT CONFIDENTIAL

§



SCT CONFID

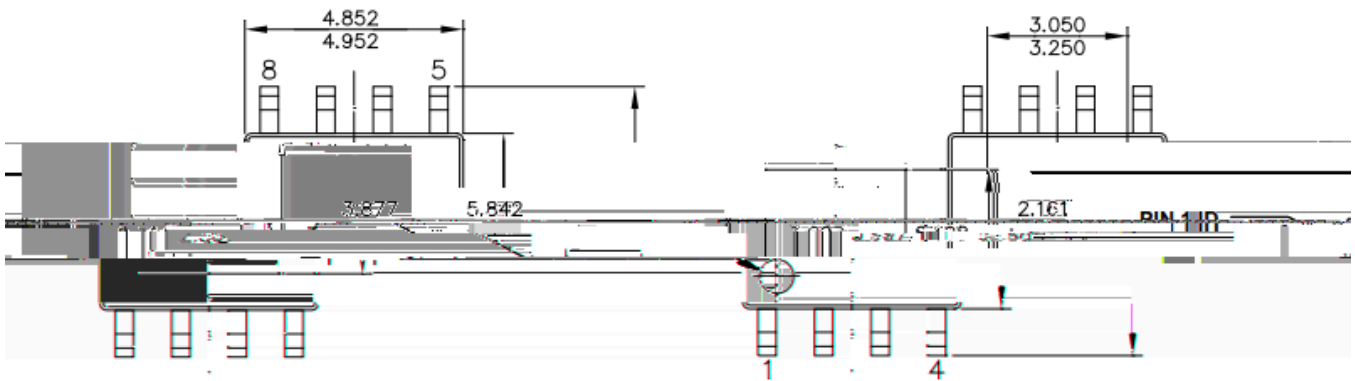
SCT CONFIDENTIAL

$$I_{\text{CINRMS}} = 0.5 I_{\text{OUT}}$$

SCT CONFIDENTIAL

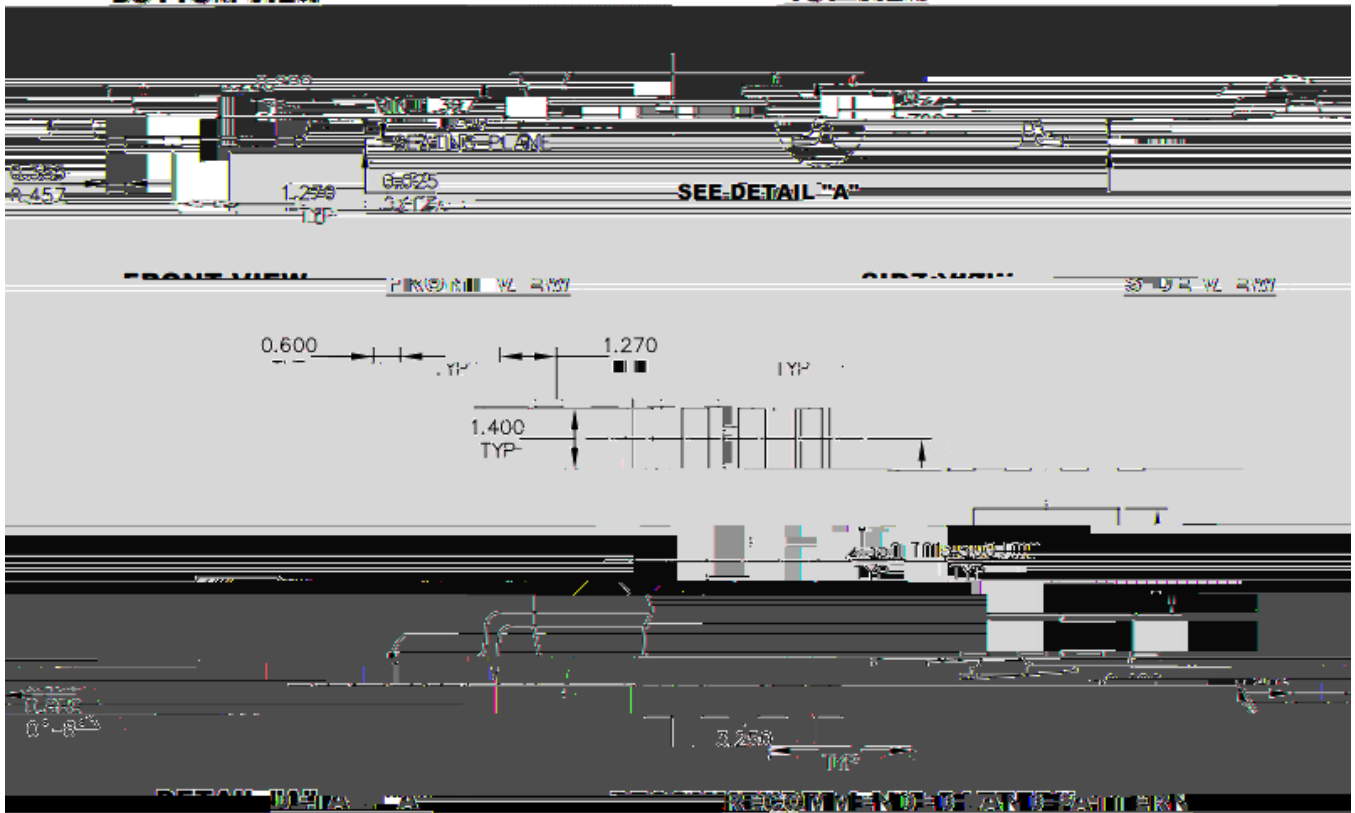
SCT CON

SCTC



BOTTOM VIEW

TOP VIEW



NOTE:

- 1) ALL DIMENSIONS ARE IN MILLIMETERS
- 2) PACKAGE LENGTH DOES NOT INCLUDE THE REFERENCE PROJECTIONS
- 3) PACKAGE WIDTH DOES NOT INCLUDE THE REFERENCE PROJECTIONS
- 4) ALL DIMENSIONS ARE IN MILLIMETERS
- 5) DRAWING REFERENCE TO OTHER DRAWINGS IS IN THE TITLE BLOCK
- 6) DRAWING IS IN THE TITLE BLOCK

SCT CONFID