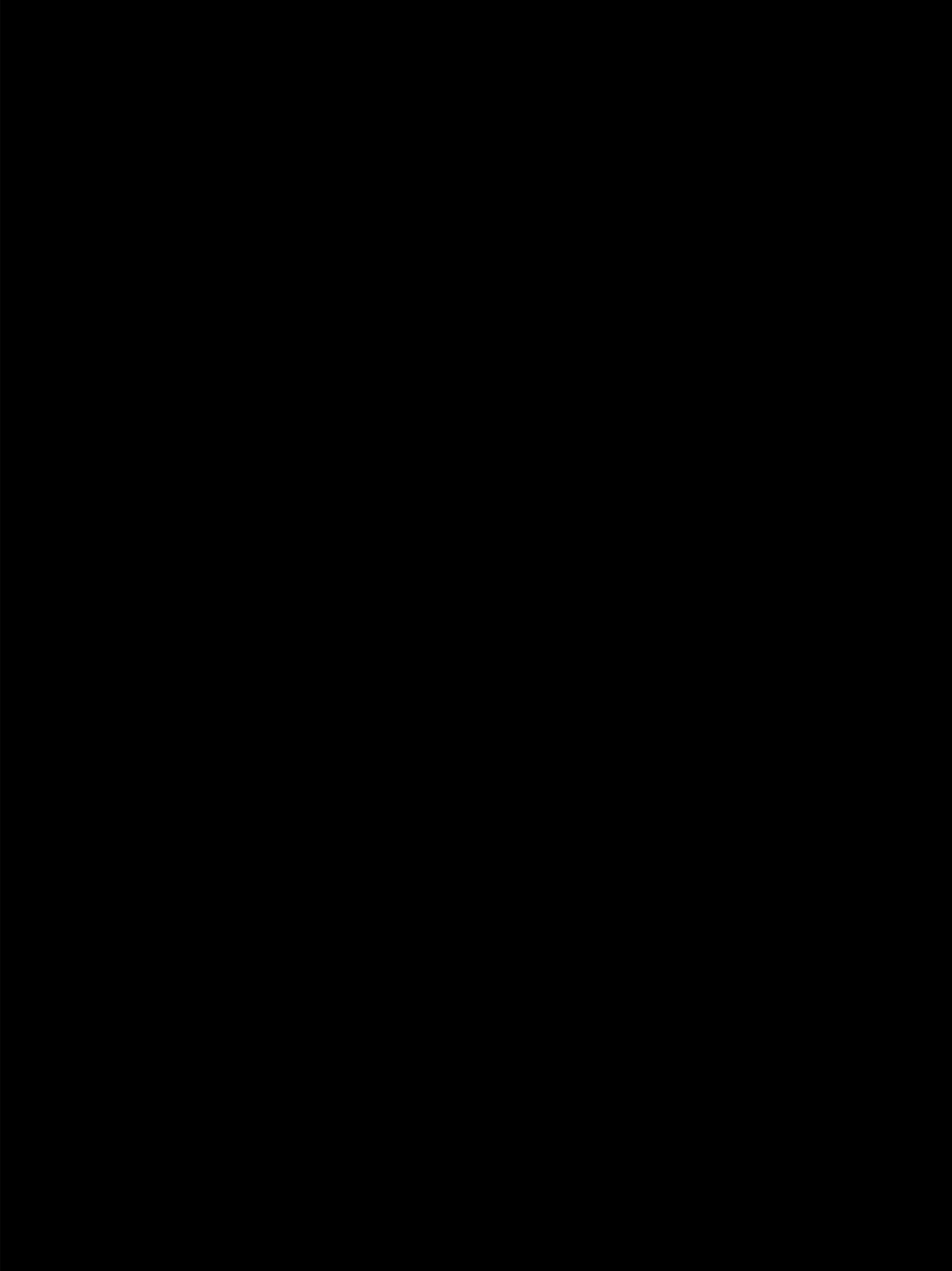


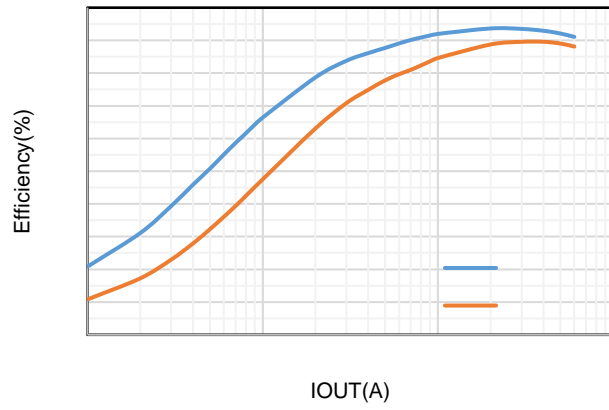


REVISION HISTORY



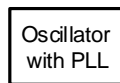
<b>Current Limit</b>				
<b>Switching Frequency</b>				
<b>Soft Start Time</b>				
<b>Protection</b>				

TYPICAL CHARACTERISTICS





FUNCTIONAL BLOCK DIAGRAM



**SCT**





Thermal Shutdown

◦  
◦

## APPLICATION INFORMATION

### Typical Application

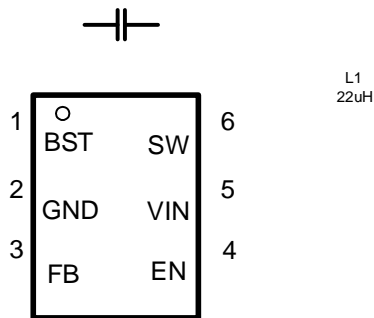


Figure 16. 24V Input, 5V/0.6A Output

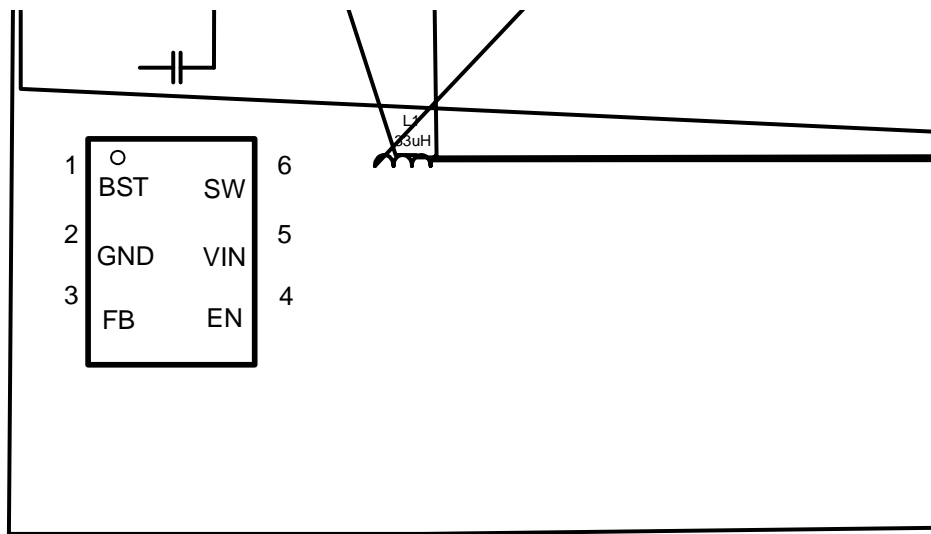


Figure 17. 24V Input, 12V/0.6A Output

### Design Parameters

Design Parameters	Example Value
Input Voltage	24V
Output Current	0.6A
Switching Frequency	1.2MHz
Start Input Voltage (rising VIN)	5.5V
Stop Input Voltage (falling VIN)	5V

**Output Voltage**

Table 1. R<sub>1</sub>, R<sub>2</sub> Value for Common Output Voltage (Room Temperature)

<b>V<sub>OUT</sub></b>	<b>R<sub>1</sub></b>	<b>R<sub>2</sub></b>



\_\_\_\_\_

### Bootstrap Capacitor Selection

### Output Capacitor Selection

\_\_\_\_\_

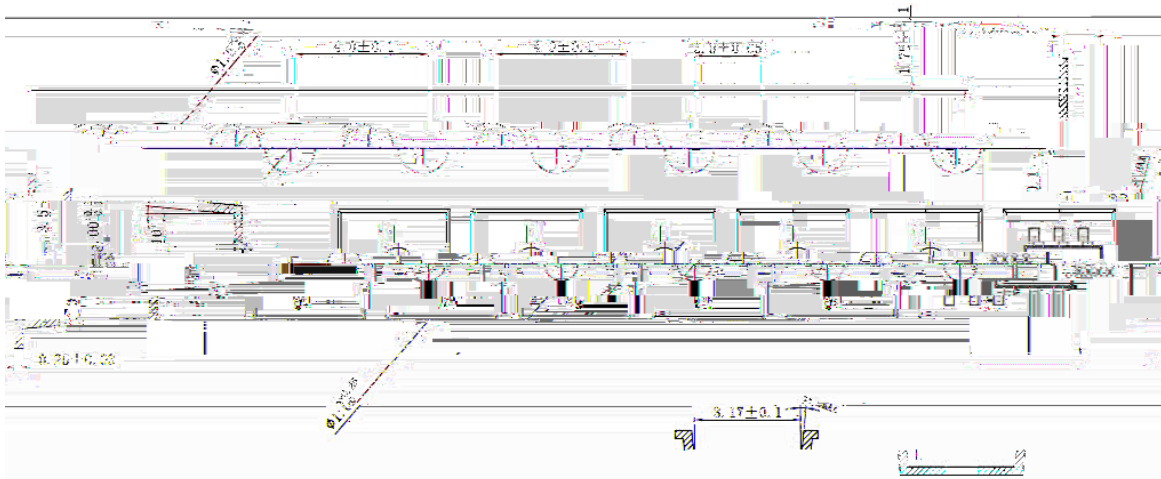
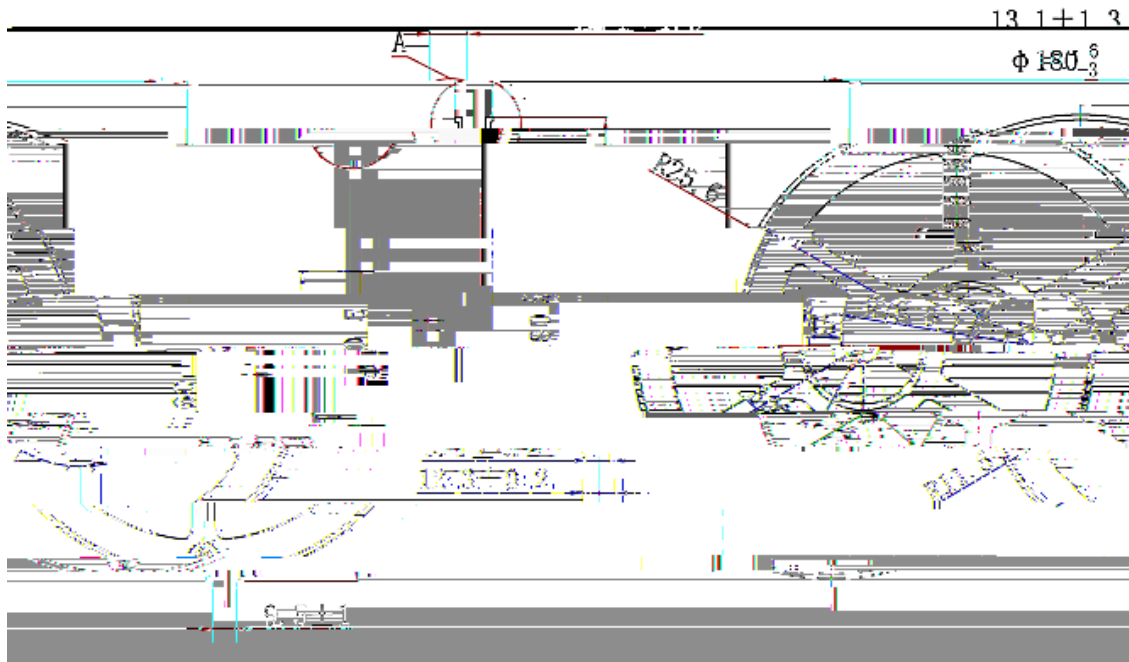
## Application Waveforms

## Layout Guideline

- 1.
- 2.



TAPE AND REEL INFORMATION



Feeding Direction

